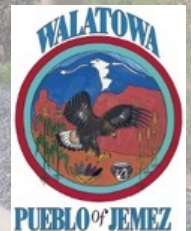


Pedestrian Fatalities in Indian Country: Responding to a Crisis

Sheri Bozic, Director

Planning, Development & Transportation Department
Pueblo of Jemez, New Mexico

July 9, 2024

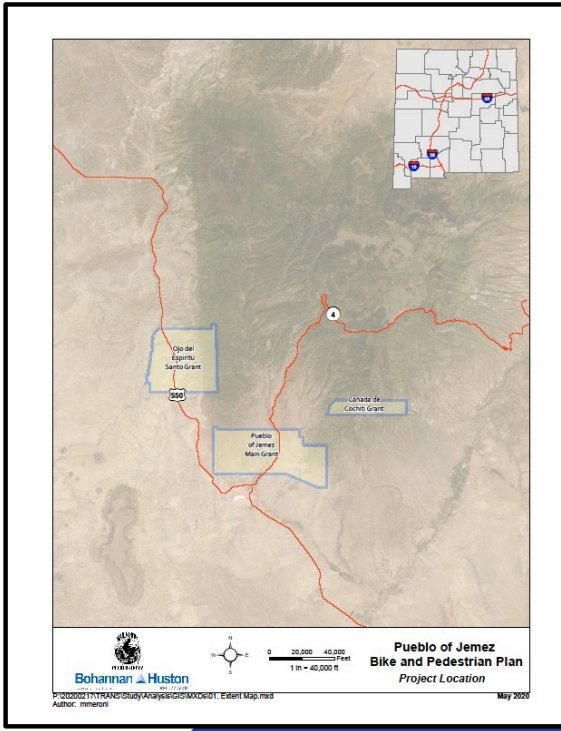


Pueblo of Jemez Location & Population

- Population: ~3,900
- Pueblo of Jemez land grant: 43,481 ac
- Ojo Del Espiritu Santo: 36,516 ac
- Canada de Cochiti: 9,648 ac
- Ancestral lands: Ancestral domain, Valles Caldera, & Spiritual Peaks



Valles Caldera National Preserve, New Mexico – Image from NPS website.



Pedestrian & Bicycle Infrastructure Hemish Path to Wellness (NM-4 Multi-use Pedestrian Trail)



Pedestrian & Bicycle Infrastructure Hemish Path to Wellness (NM-4 Multi-use Pedestrian Trail)

Data and Historical Documents to Tell the Story and Demonstrate Need for Pedestrian & Bicycle Facility along the NM-4

- Jemez Police Dept. speeding citations
- NMDOT Crash Database: 11 accidents, 3 injuries, and 1 fatality on NM 4 between 2012 and 2016
- NM 4 Constructed in 1942
- Via use of Pueblo Land Condemnation Act
- Jemez was compensated \$3,134 for 74 acres of land

CITATION TYPE	FY 2015	FY 2016	FY 2017	FY 2018
Speeding Citations	3,462	5,471	6,669	4,946
Seat Belt Citations	81	21	82	49
Unlicensed Driver	123	130	176	111
Unregistered Vehicle	86	98	165	162
Uninsured Vehicle	457	306	247	238
Total Moving Violations	4,298	6,172	7,572	5,344

TABLE OF PUEBLO LAND CONDEMNATION ACT

For use of May 13, 1976, has been used to put effect of any action taken by the Secretary of the Public Works in the following instances:

Case No.	Date/Order	Description	Date
10000	Order 117	Highway-7,300 acres	July 10, 1913
10001	Order 200	Highway-5,717 acres	Order Oct. 13, 1913
10002	Order 204	Highway-1,000 acres	Order Oct. 13, 1913
10003	Order 205	Highway-1,000 acres	Order Oct. 13, 1913
10004	Order 206	Highway-1,000 acres	Order Oct. 13, 1913
10005	Order 207	Highway-1,000 acres	Order Oct. 13, 1913
10006	Order 208	Highway-1,000 acres	Order Oct. 13, 1913
10007	Order 209	Highway-1,000 acres	Order Oct. 13, 1913
10008	Order 210	Highway-1,000 acres	Order Oct. 13, 1913
10009	Order 211	Highway-1,000 acres	Order Oct. 13, 1913
10010	Order 212	Highway-1,000 acres	Order Oct. 13, 1913
10011	Order 213	Highway-1,000 acres	Order Oct. 13, 1913
10012	Order 214	Highway-1,000 acres	Order Oct. 13, 1913
10013	Order 215	Highway-1,000 acres	Order Oct. 13, 1913
10014	Order 216	Highway-1,000 acres	Order Oct. 13, 1913
10015	Order 217	Highway-1,000 acres	Order Oct. 13, 1913
10016	Order 218	Highway-1,000 acres	Order Oct. 13, 1913
10017	Order 219	Highway-1,000 acres	Order Oct. 13, 1913
10018	Order 220	Highway-1,000 acres	Order Oct. 13, 1913
10019	Order 221	Highway-1,000 acres	Order Oct. 13, 1913
10020	Order 222	Highway-1,000 acres	Order Oct. 13, 1913
10021	Order 223	Highway-1,000 acres	Order Oct. 13, 1913
10022	Order 224	Highway-1,000 acres	Order Oct. 13, 1913
10023	Order 225	Highway-1,000 acres	Order Oct. 13, 1913
10024	Order 226	Highway-1,000 acres	Order Oct. 13, 1913
10025	Order 227	Highway-1,000 acres	Order Oct. 13, 1913
10026	Order 228	Highway-1,000 acres	Order Oct. 13, 1913
10027	Order 229	Highway-1,000 acres	Order Oct. 13, 1913
10028	Order 230	Highway-1,000 acres	Order Oct. 13, 1913
10029	Order 231	Highway-1,000 acres	Order Oct. 13, 1913
10030	Order 232	Highway-1,000 acres	Order Oct. 13, 1913
10031	Order 233	Highway-1,000 acres	Order Oct. 13, 1913
10032	Order 234	Highway-1,000 acres	Order Oct. 13, 1913
10033	Order 235	Highway-1,000 acres	Order Oct. 13, 1913
10034	Order 236	Highway-1,000 acres	Order Oct. 13, 1913
10035	Order 237	Highway-1,000 acres	Order Oct. 13, 1913
10036	Order 238	Highway-1,000 acres	Order Oct. 13, 1913
10037	Order 239	Highway-1,000 acres	Order Oct. 13, 1913
10038	Order 240	Highway-1,000 acres	Order Oct. 13, 1913
10039	Order 241	Highway-1,000 acres	Order Oct. 13, 1913
10040	Order 242	Highway-1,000 acres	Order Oct. 13, 1913
10041	Order 243	Highway-1,000 acres	Order Oct. 13, 1913
10042	Order 244	Highway-1,000 acres	Order Oct. 13, 1913
10043	Order 245	Highway-1,000 acres	Order Oct. 13, 1913
10044	Order 246	Highway-1,000 acres	Order Oct. 13, 1913
10045	Order 247	Highway-1,000 acres	Order Oct. 13, 1913
10046	Order 248	Highway-1,000 acres	Order Oct. 13, 1913
10047	Order 249	Highway-1,000 acres	Order Oct. 13, 1913
10048	Order 250	Highway-1,000 acres	Order Oct. 13, 1913
10049	Order 251	Highway-1,000 acres	Order Oct. 13, 1913
10050	Order 252	Highway-1,000 acres	Order Oct. 13, 1913
10051	Order 253	Highway-1,000 acres	Order Oct. 13, 1913
10052	Order 254	Highway-1,000 acres	Order Oct. 13, 1913
10053	Order 255	Highway-1,000 acres	Order Oct. 13, 1913
10054	Order 256	Highway-1,000 acres	Order Oct. 13, 1913
10055	Order 257	Highway-1,000 acres	Order Oct. 13, 1913
10056	Order 258	Highway-1,000 acres	Order Oct. 13, 1913
10057	Order 259	Highway-1,000 acres	Order Oct. 13, 1913
10058	Order 260	Highway-1,000 acres	Order Oct. 13, 1913
10059	Order 261	Highway-1,000 acres	Order Oct. 13, 1913
10060	Order 262	Highway-1,000 acres	Order Oct. 13, 1913
10061	Order 263	Highway-1,000 acres	Order Oct. 13, 1913
10062	Order 264	Highway-1,000 acres	Order Oct. 13, 1913
10063	Order 265	Highway-1,000 acres	Order Oct. 13, 1913
10064	Order 266	Highway-1,000 acres	Order Oct. 13, 1913
10065	Order 267	Highway-1,000 acres	Order Oct. 13, 1913
10066	Order 268	Highway-1,000 acres	Order Oct. 13, 1913
10067	Order 269	Highway-1,000 acres	Order Oct. 13, 1913
10068	Order 270	Highway-1,000 acres	Order Oct. 13, 1913
10069	Order 271	Highway-1,000 acres	Order Oct. 13, 1913
10070	Order 272	Highway-1,000 acres	Order Oct. 13, 1913
10071	Order 273	Highway-1,000 acres	Order Oct. 13, 1913
10072	Order 274	Highway-1,000 acres	Order Oct. 13, 1913
10073	Order 275	Highway-1,000 acres	Order Oct. 13, 1913
10074	Order 276	Highway-1,000 acres	Order Oct. 13, 1913
10075	Order 277	Highway-1,000 acres	Order Oct. 13, 1913
10076	Order 278	Highway-1,000 acres	Order Oct. 13, 1913
10077	Order 279	Highway-1,000 acres	Order Oct. 13, 1913
10078	Order 280	Highway-1,000 acres	Order Oct. 13, 1913
10079	Order 281	Highway-1,000 acres	Order Oct. 13, 1913
10080	Order 282	Highway-1,000 acres	Order Oct. 13, 1913
10081	Order 283	Highway-1,000 acres	Order Oct. 13, 1913
10082	Order 284	Highway-1,000 acres	Order Oct. 13, 1913
10083	Order 285	Highway-1,000 acres	Order Oct. 13, 1913
10084	Order 286	Highway-1,000 acres	Order Oct. 13, 1913
10085	Order 287	Highway-1,000 acres	Order Oct. 13, 1913
10086	Order 288	Highway-1,000 acres	Order Oct. 13, 1913
10087	Order 289	Highway-1,000 acres	Order Oct. 13, 1913
10088	Order 290	Highway-1,000 acres	Order Oct. 13, 1913
10089	Order 291	Highway-1,000 acres	Order Oct. 13, 1913
10090	Order 292	Highway-1,000 acres	Order Oct. 13, 1913
10091	Order 293	Highway-1,000 acres	Order Oct. 13, 1913
10092	Order 294	Highway-1,000 acres	Order Oct. 13, 1913
10093	Order 295	Highway-1,000 acres	Order Oct. 13, 1913
10094	Order 296	Highway-1,000 acres	Order Oct. 13, 1913
10095	Order 297	Highway-1,000 acres	Order Oct. 13, 1913
10096	Order 298	Highway-1,000 acres	Order Oct. 13, 1913
10097	Order 299	Highway-1,000 acres	Order Oct. 13, 1913
10098	Order 300	Highway-1,000 acres	Order Oct. 13, 1913

16, 1942

ORDER OF THE COURT

IN AND FOR THE COUNTY OF SAGUO, NEW MEXICO

Attorney General

18215

This Department has been informed that the judgment has been paid in full and the proceeds delivered to the Superintendent of the United Justice Agency.

There is no further reason to be done in this case the file of this Department is being closed.

Respectfully,
For the Attorney General

ROBERT W. LITTLE
Assistant Attorney General





Pedestrian & Bicycle Infrastructure
Hemish Path to Wellness
(NM-4 Multi-use Pedestrian Trail)



Pedestrian & Bicycle Infrastructure Hemish Path to Wellness (NM-4 Multi-use Pedestrian Trail)



Pedestrian & Bicycle Infrastructure Hemish Path to Wellness (NM-4 Multi-use Pedestrian Trail)





Pedestrian & Bicycle Infrastructure Day School Rd. Quick-build Project



Pedestrian & Bicycle Infrastructure Day School Rd. Quick-build Project

Pedestrian & Bicycle
Infrastructure:
Proposed Quick-build
Project on NM-4 at
Red Rocks Area



—

Transportation Safety Infrastructure: Solar-powered Radar Speed Feedback Signs



Transportation
Safety
Infrastructure:
Gateway
Monuments



Questions

Contact Information:

Sheri Bozic, Director
Planning Development & Transportation Department
Pueblo of Jemez
Sheri.Bozic@jemezpuablo.org
(575)834-0094

