

Using the Safe Systems Pyramid to Guide Interagency Collaboration

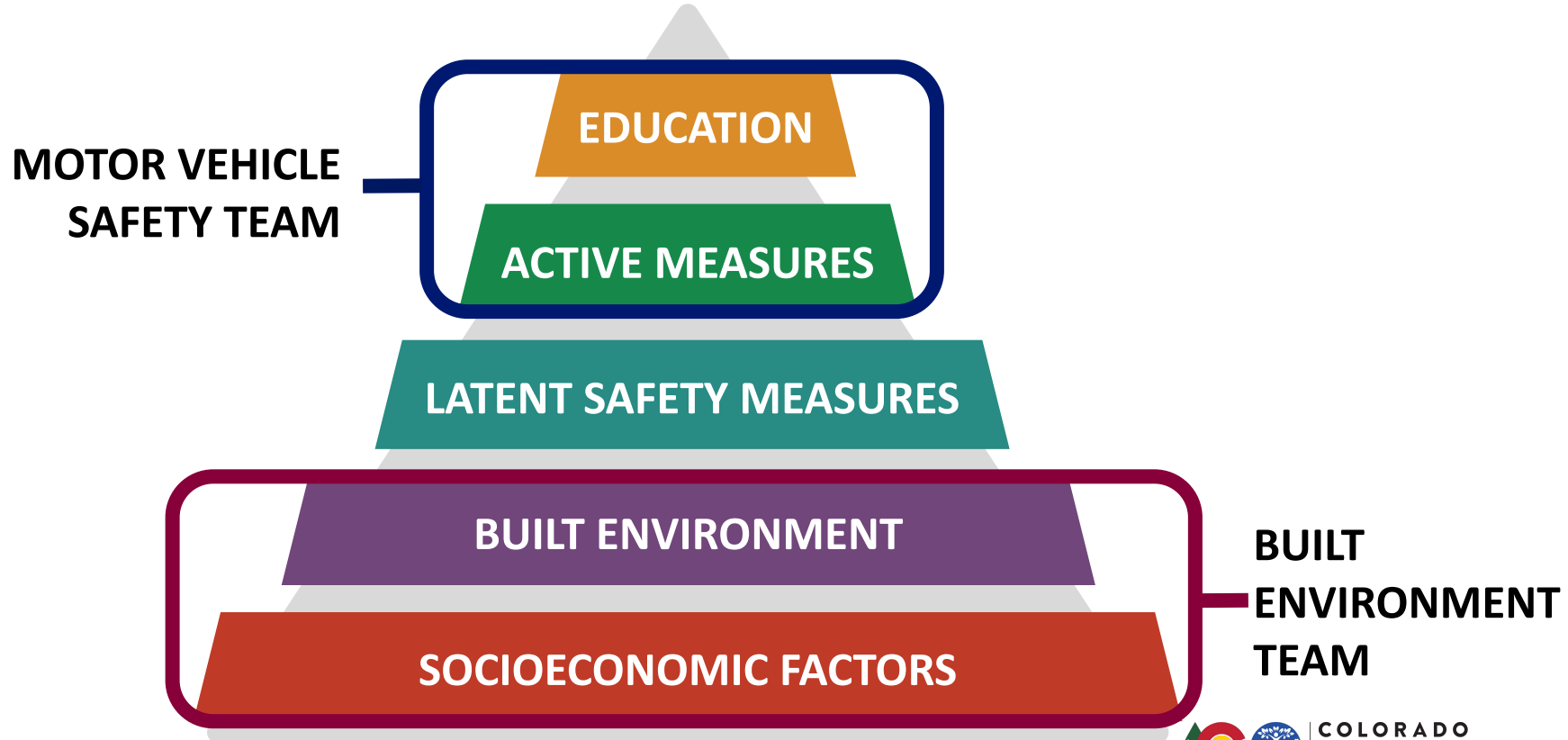
Steph Leonard, MPH, MURP, AICP
Built Environment Coordinator
Colorado Department of Public Health and Environment

America Walks | October 15, 2024

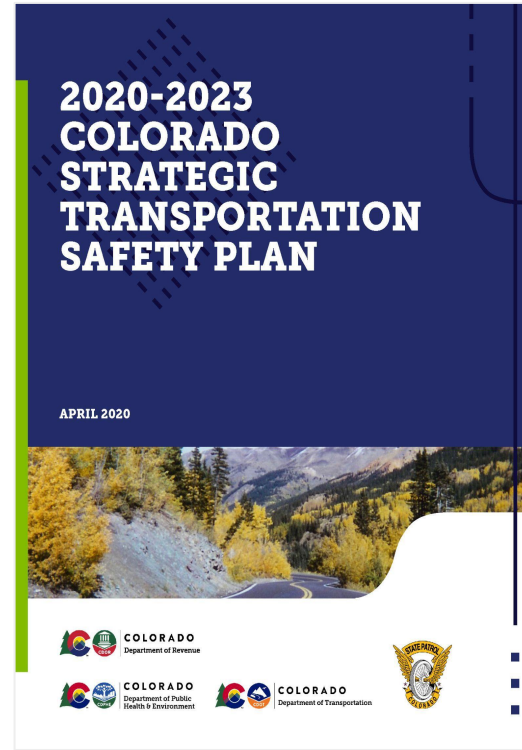
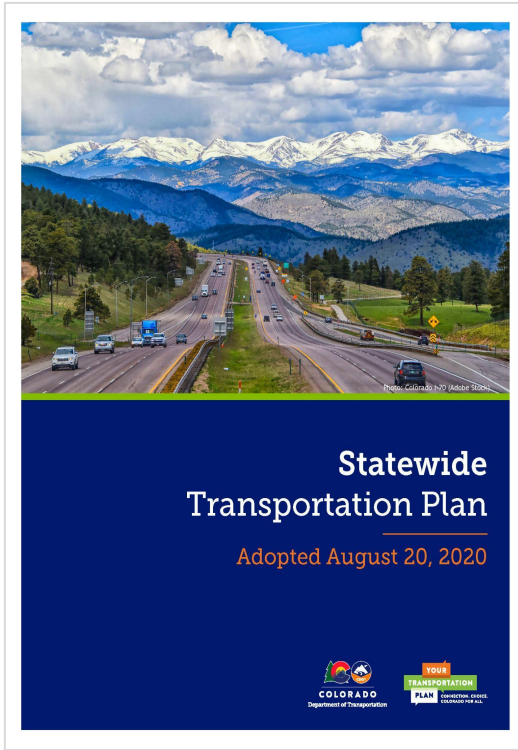
Personal roadmap to this work



Internal Organization around the Pyramid




Statewide Transportation Planning



[Colorado Statewide Transportation Plan](#)
[Colorado Strategic Transportation Safety Plan](#)

Advancing Transportation Safety

									
Emphasis Areas			Status					Quarters	
Post-Crash Care	Safe Driving	Safe People	Safe Roads	Safety Culture	In Development	Planned	In Progress	Completed	Filter Emphasis Area All
									Filter Columns Show Quarterly Status
Q1: January - March	Q2: April - June	Q3: July - September	Q4: October - December						
Action Summary	Lead Agency	Outcomes	Emphasis Area	Q1 2024	Q2 2024	Q3 2024	Q4 2024		
Add bikability and walkability considerations to the PD 1602 Update	Colorado Department of Transportation								
Appropriate Pedestrian Crossing Times at Signals	Colorado Department of Transportation	Lead Pedestrian Interval (LPI) Guidance for local agencies.							
Automated Enforcement	Colorado State Patrol	Install speed enforcement cameras on five pilot state corridors by June 30, 2024 in coordination with law enforcement to support the new Automated Speed Enforcement Law (SB23-200).							
Bicycle & Pedestrian Facility Database	Colorado Department of Transportation	Database of bicycle and pedestrian facilities layers for on and off-system roads. To be completed in 2024.							
CDOT Regions' Safety Projects	Colorado Department of Transportation								
Community-Based Mobility Options	MPOs/ TPRs	Pilot senior ride-sharing programs or micro-transit in areas of need.							
Complete Streets Training and Education	Colorado Department of Transportation	Training program based on Complete Streets Design Guidance. Outreach plan to local agencies.							



Disproportionately Impacted Communities

“Viewing crashes as a public health problem requires those working in transportation safety to consider and attempt to improve the underlying social context in which these crashes take place.”

Disproportionately Impacted Community

- Low Income
- People of Color
- Housing Burden
- Linguistically Isolated
- Federal CEJST (Justice40)
- Tribal Lands
- EnviroScreen Score
- More than one category

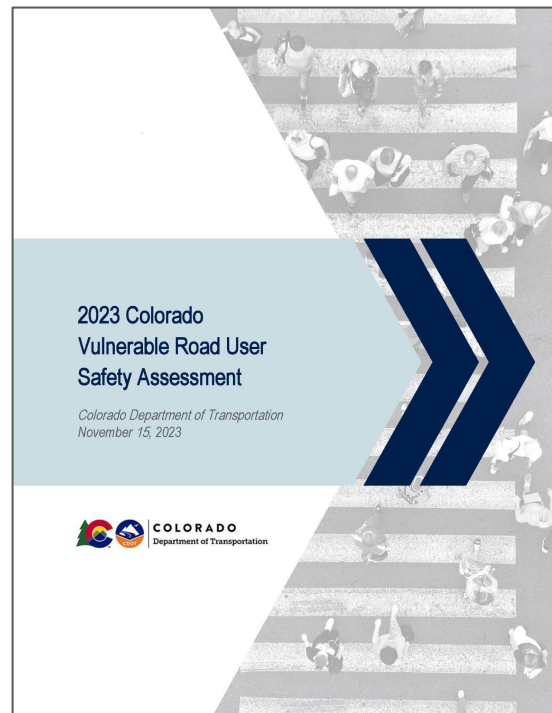
[Colorado EnviroScreen](#)
[Ederer, et al](#)



COLORADO
Department of Public
Health & Environment

Vulnerable Road User Safety Assessment

- Safe Systems Approach as guiding principle
- Equity analysis using CO EnviroScreen
- Statewide VRU High Injury Network (39 locations)
 - 92% in DI communities
 - 72% in highest level (>1 category)



[CO VRU Safety Assessment](#)

Active Transportation Funding



[Revitalizing Main Streets](#)

Active Transportation Funding



Colorado
Safe Routes
to School



Revitalizing
Main Streets



COLORADO
Department of Public
Health & Environment

Work with Local Communities - Framework



Adapted from [Action Planning Guide](#)
[CO Community Engagement Toolkit](#)



COLORADO
Department of Public
Health & Environment

Ex. Safe Routes to Parks > SS4A

Safe Routes to Parks Activating Communities

- City of Wheat Ridge
- Included project in regional Safer Streets and Roads For All application



Community Context



Action Planning



Implementation

<https://whatsupwheatridge.com/srtp>



COLORADO
Department of Public
Health & Environment

Thank you!

steph.leonard@state.co.us



COLORADO
Department of Public
Health & Environment