

A Community-Engaged Approach to Tribal Pedestrian Safety Advocacy and Action

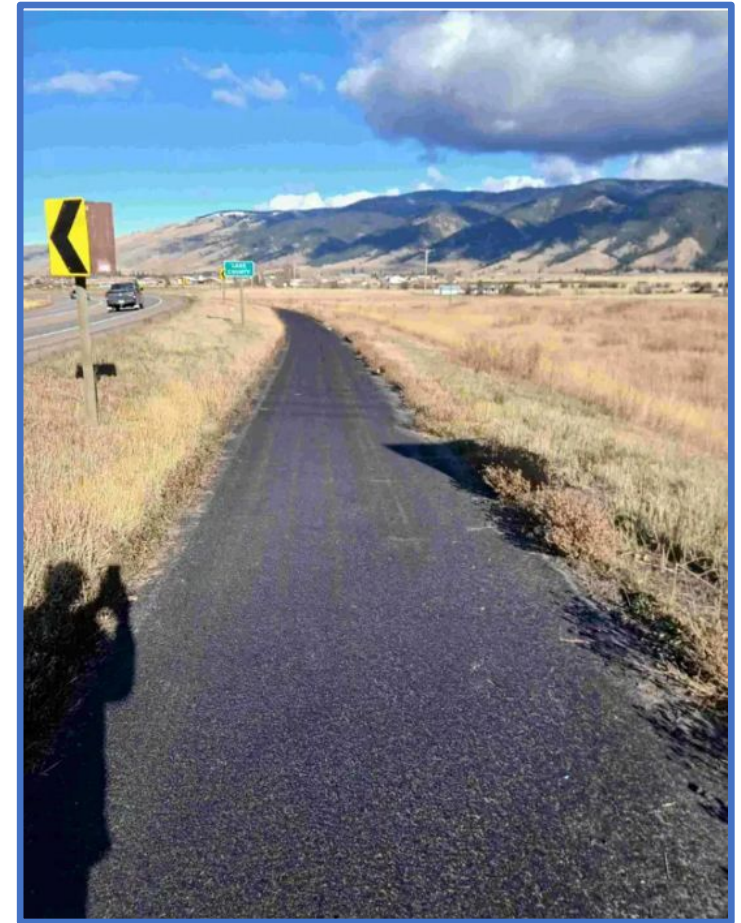
8.27.25

Samantha Morigeau, PT, DPT

Physical Therapist, Confederated Salish and Kootenai Tribes Tribal Health

Maja Pedersen, PhD

Assistant Professor, University of Montana
School of Public and Community Health
Sciences



Our CBPR Team & Research Program

Academic & Community Research Team

CSKT Tribal Health / Community

Samantha Morigeau

Chelsea Kleinmeyer

Niki Graham

Jason Krumbeck

Paul Phillips

Amber Landowski

Jessica Knoll

Lisa Caldbeck

Lynn Hendrickson

Frank Oldhorn

Halle Adams

University of Montana SPCHS

Maja Pedersen

Taylor Stewart

Ali Manuel

Eve Christiansen



Credit:
Dr. Samantha Morigeau

CSKT Community Advisory Panel

Gene Sorrell

Willie Matt Wright

Louis Caye JR

Ruth Swaney

Maggie Goode

Barb Fink

Gary Woodcock

Selina Kenmille

Carrie Irvine

Roberta Steele

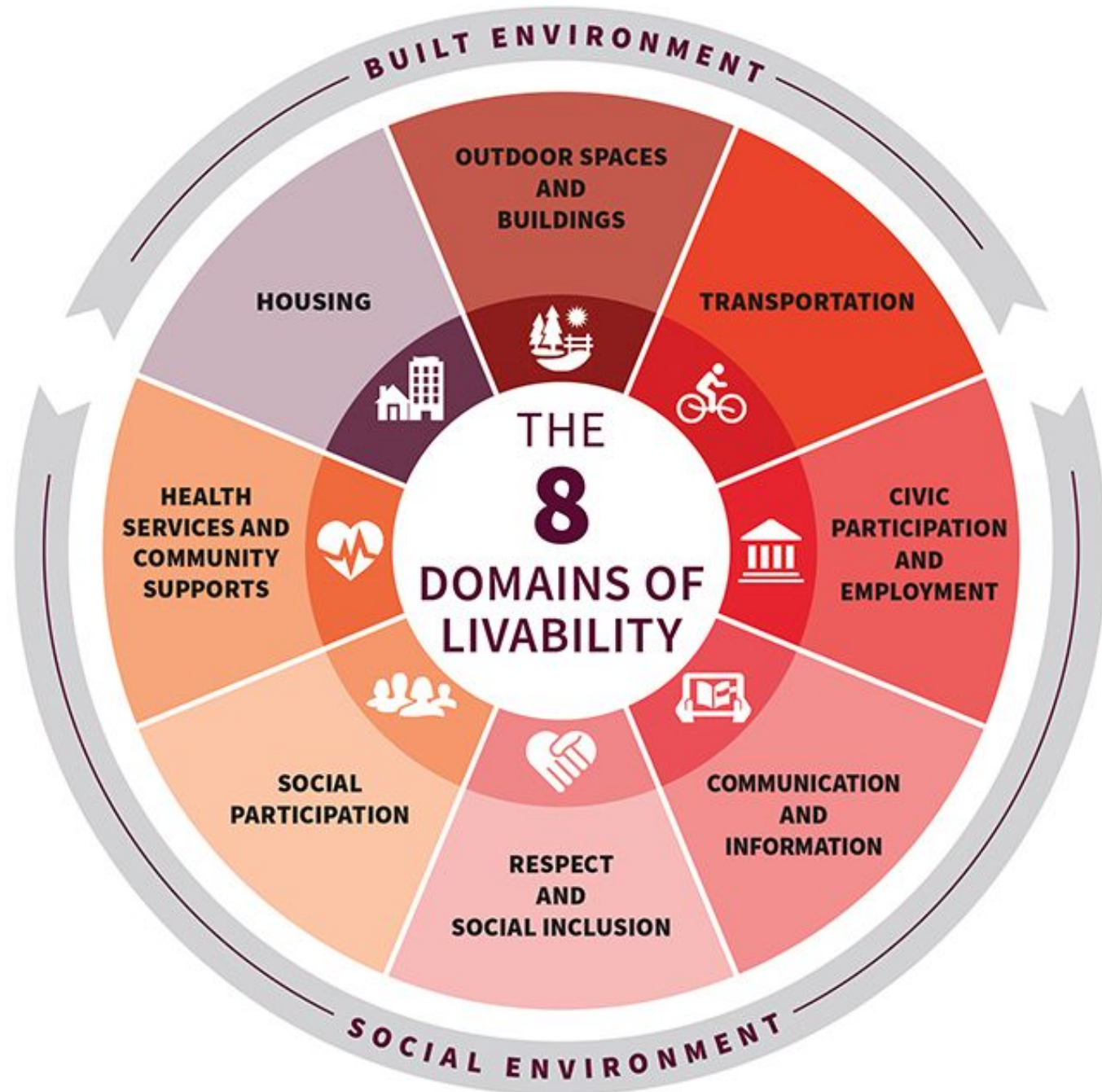
Clark Matt

Cheryl Vanderburg

Dana Hewankorn

Barb Barnes

AARP 8 Domains
of Livability
*for people of all
ages*



Neighborhood & Built Environment

Physically and psychologically safe transportation options that reduce emissions and provide access to clean air, nutritious food, and greenspace.



Healthcare

Reliable, efficient and convenient access to preventative health services, medical treatment, and emergency care.



Education

Convenient access to learning and training opportunities, from early childhood to older adult.



Social & Community Context

Multimodal transportation that connects with community and relationships to support social, physical, and mental wellbeing.



Economic Stability

Affordable and reliable transportation options to access employment and build wealth.



Behavioral Health
opportunities for
physical activity,
social interaction,
nutritious food,
healthcare

Social Inclusion
access to places,
people and power

Equitable
Health &
Wellness

Environmental Health
safety from crashes, noise, crime,
disproportionate enforcement,
pollution, climate change

Intersections of Transportation & Health

Source: Center for Transportation
Studies, University of Minnesota, 2022

Our Voice in Motion

Funding:

DHHS Administration for Community Living (90FPG0066-01-00; PI: Pedersen, 2023-2027)

National Safety Council: 2024 Road to Zero Community Traffic Safety Grant (PI: Thomas, 2024-2025)

2024 National Council on Aging Falls Prevention Fellowship (PI: Morigeau, 2024-2025)

Growing Older, Staying Strong
and America Walks present

Our Voice in Motion: St. Ignatius

A pedestrian safety “Quick-Build” project

Join us for a day of painting, food, and
community connection as we make our
streets safer together

Wednesday, 8/27
9 am to 5 pm

St. Ignatius, MT

Change of
Duty with
Supervisor
Approval

9:00 AM – Welcome, opening prayer, project overview
Elder’s Park (behind Tribal Health)

9:15 AM – Crosswalk painting and path improvements

12:30 PM – Lunch and Community feedback
SQCC Longhouse

1:30 PM – Second art & traffic-calming installation
Blind Barnaby & Saxa Lane intersection

What to Expect

Hands-on roadway painting
Honoring place and safety through Indigenous design
Fun, food, and meaningful community connection
All welcome, children must be accompanied by an adult

Questions? Contact:
Samantha Morigeau, 406-546-1023,
samantha.morigeau@cskthealth.org or
Halle Adams, 406-677-8885

In collaboration with



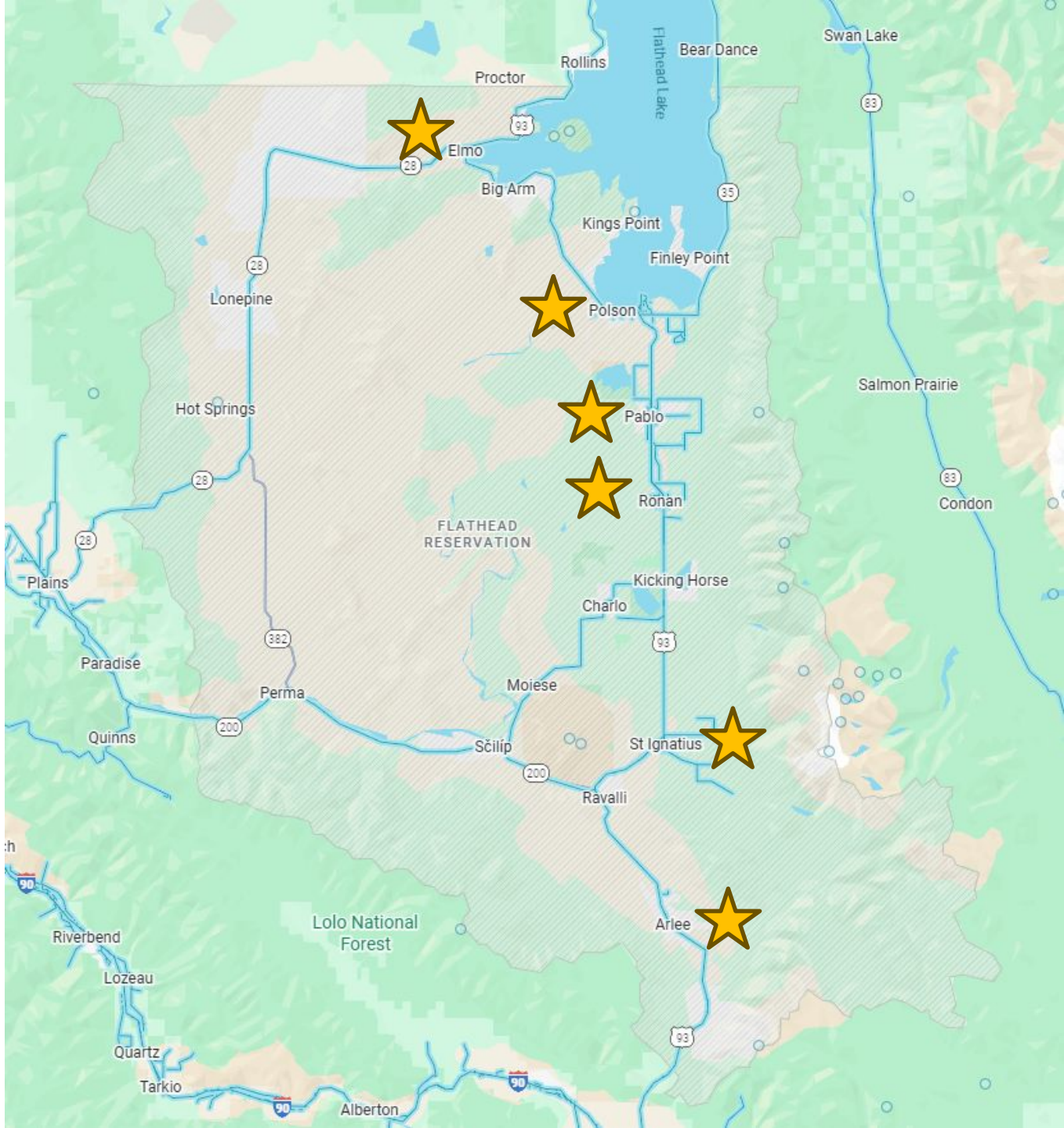




STEP 1: ENGAGE

(Sept-Oct 2024)

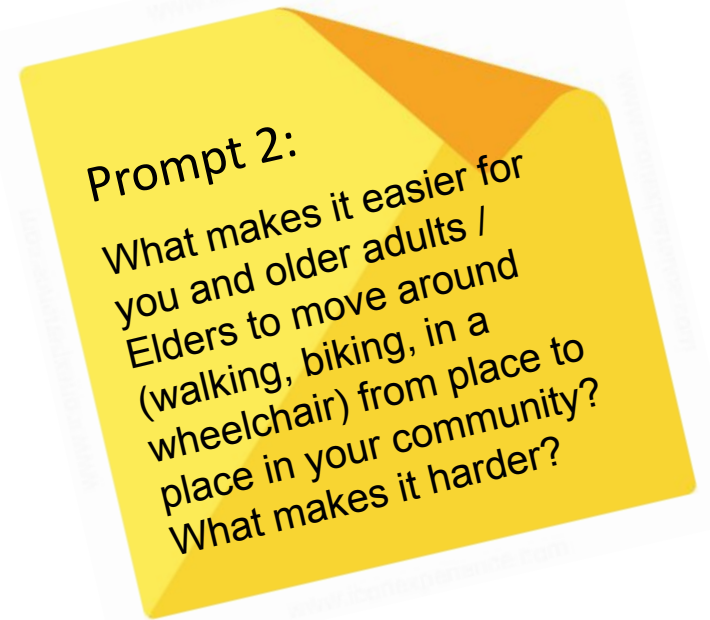
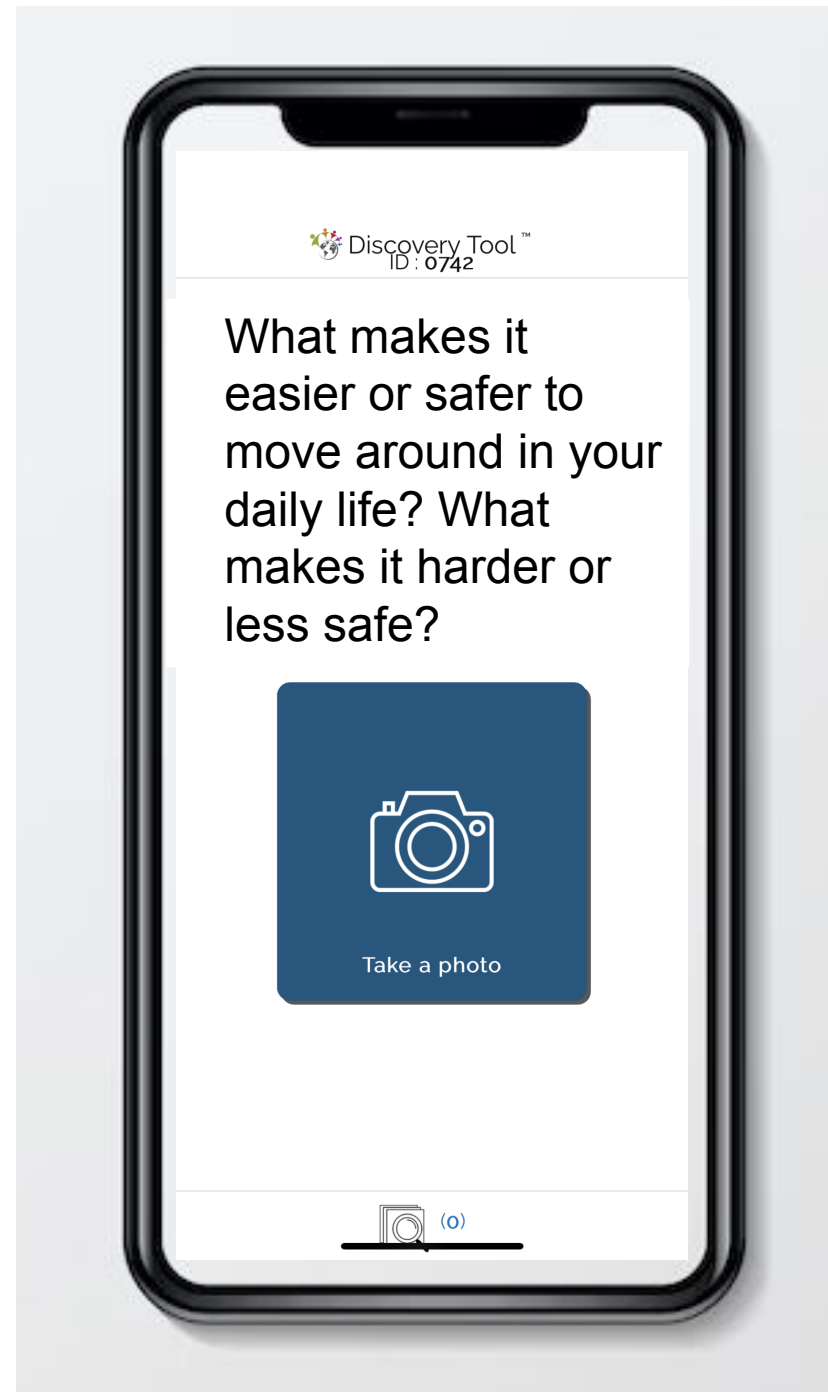
- Recruitment: Community Facilitators
- Sites: Six CSKT Tribal Health sites located along Highway 93
- Sample: Older adults enrolled in a fall prevention program





Stanford Discovery Tool Mobile App

- A simple app to document and map audiovisual, narrative aspects of lived experiences
- 2 Prompts



Thematic Tags (*could layer*):

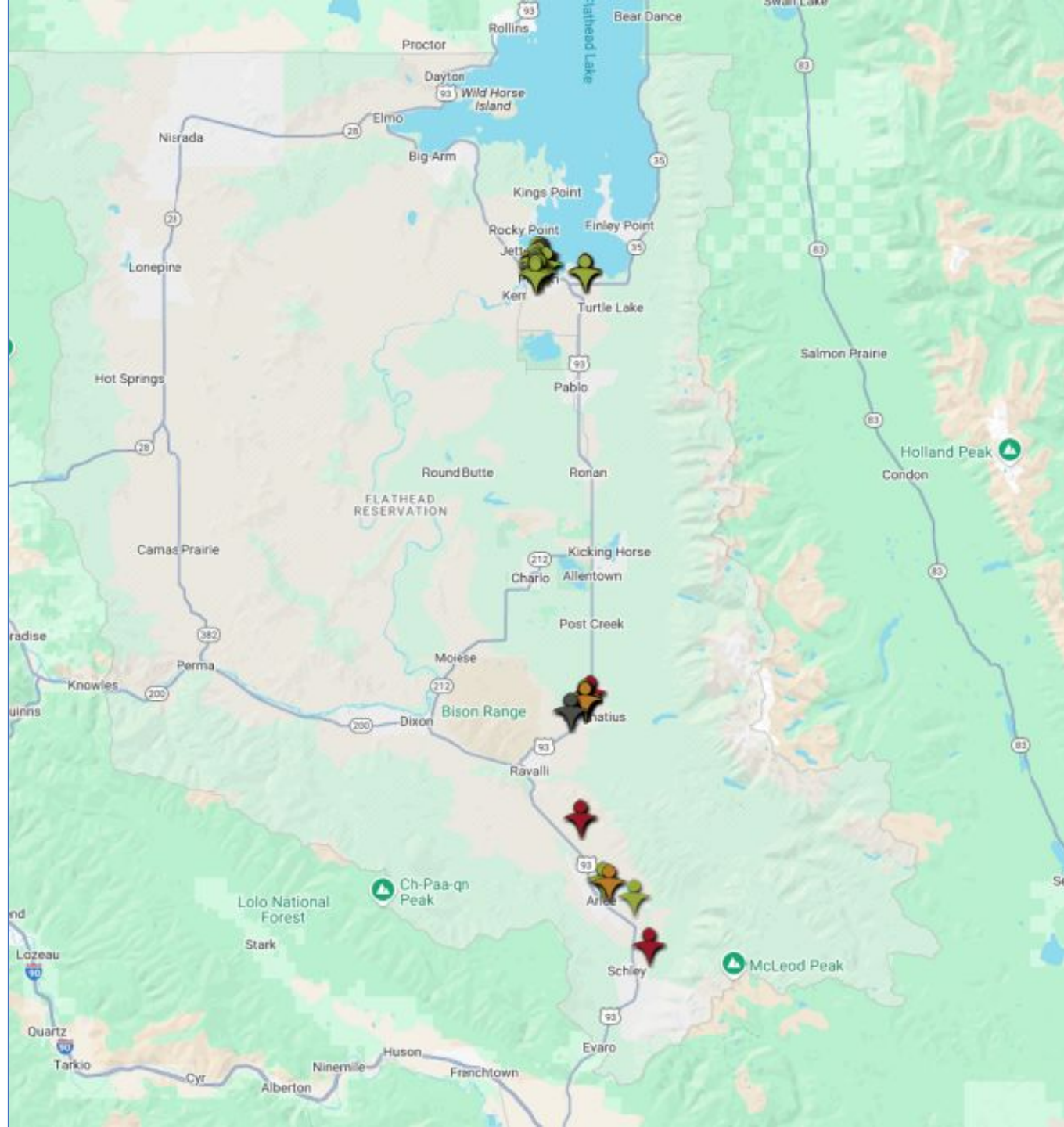
- Street Design
- Walkability
- Community Connectedness
- Fall Risk
- Weather



STEP 2 RESULTS

Oct-Dec 2024

- Discovery Tool data:
 - 3 communities
 - 28 community walks
 - 64 photos
 - 65 narratives (18 audio, 47 text)
 - 70 tags (Walkability 50%; Fall risk 17%)



STEP 2: DISCOVER

“Need more safe crosswalks like this...”



TAG:



- **Walkability**



"I am walking towards the walking path behind tribal fitness center and I will document that there are no street lights around it, which makes it very unsafe."

Location of photo



TAGS:

- Fall Risk
- Walkability
- Street Design



[Site of Quick Build #1: St Ignatius Tribal Health
-- Elder's Park Walking Path Access]

"This is a view from the parking lot behind tribal health. It is not safe for people that are handicapped because you have to walk downhill at a steep grade."



Location of photo

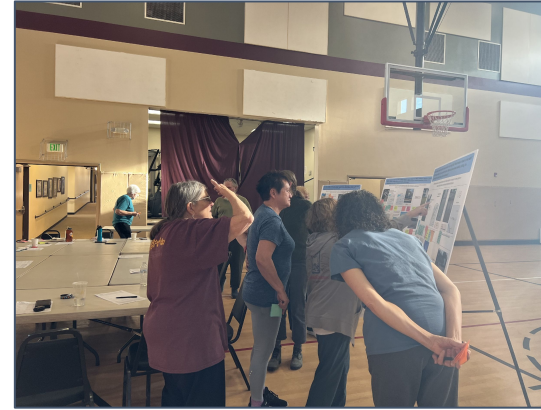


TAG:
• Fall risk



STEPS 3 & 4: DISCUSS & IMAGINE (Dec 2024-Feb 2025)

Method: Data Museums & Interpretive Focus Groups





STEPS 3 & 4: RESULTS

- Participant Focus Groups
 - Dec 2024
 - N=39
 - 5 communities
 - Session length: 60-90 min / session

- Community Advisory Panel Review and Discussion
 - Feb 2025
 - N=14
 - Session length: 75 minutes

Participant characteristic, N=39	Summary statistic, N (%)
SAIL Classes Represented	
Arlee	13 (33.3%)
Elmo	0 (0.0%)
Mission	8 (20.5%)
Pablo	3 (7.7%)
Polson	9 (23.1%)
Ronan	2 (5.1%)
N/A (Not a SAIL participant)	4 (10.3%)
Age	
Average	68
Range (Minimum, Maximum)	53 (29, 82)
Gender, N (%)	
Female	30 (77%)
Male	9 (23%)
Ethnicity	
Hispanic or Latino	0 (0%)
Not Hispanic or Latino	38 (100%)
Race	
American Indian or Alaska Native	29 (74.4%)
Asian	0 (0.0%)
Black or African American	1 (2.6%)
Native Hawaiian or Pacific Islander	0 (0.0%)
White	15 (38.5%)
Health Rating	
Poor	0 (0.0%)
Fair	7 (17.9%)
Good	20 (51.3%)
Very Good	11 (28.2%)
Excellent	1 (2.6%)

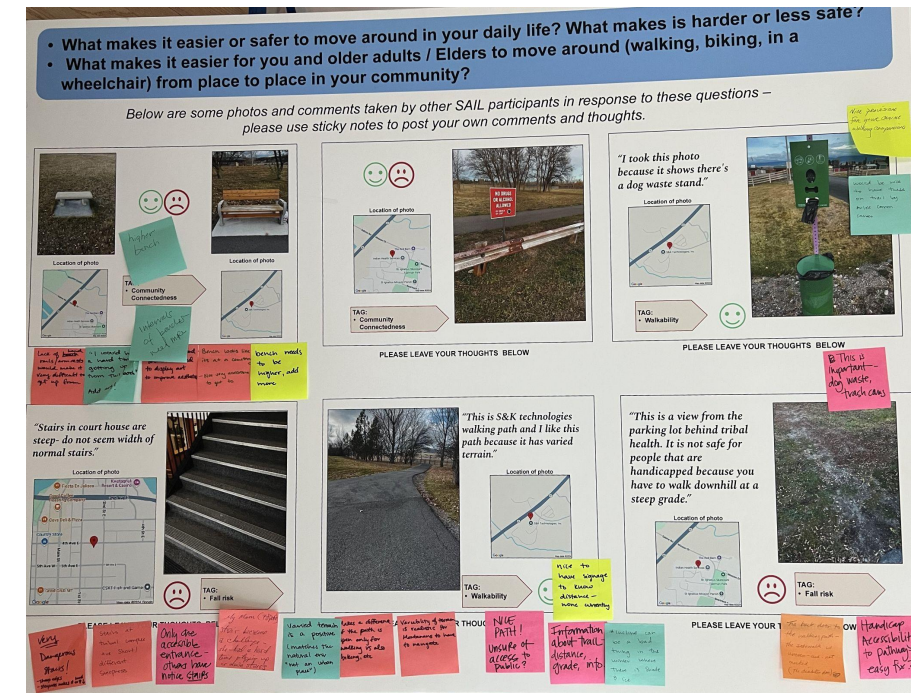
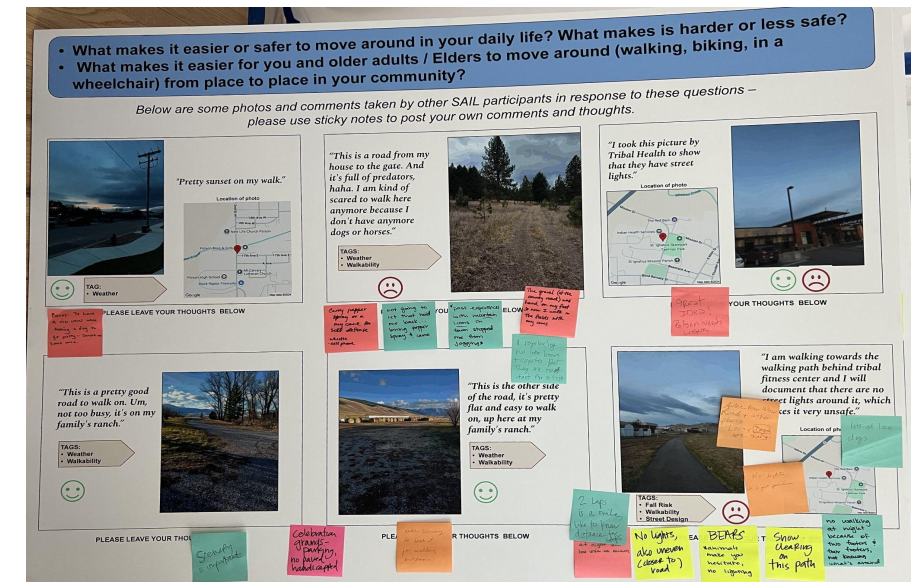


STEP 5: ACTIVATE

- May - July 2026
- Community Forum
- Presentations to:

- State Senator Jacinda Morigeau (SD 46)
- Montana Dept. of Transportation
- CSKT Roads Program
- CSKT Tribal Council
- Locations: Zoom, Phone, Salish Kootenai College, CSKT Tribal Council Chambers

- **PURPOSE:** Share findings, identify common priority areas, identify near-term projects and long-term goals





STEP 6: CHANGE: St. Ignatius Quick Build



SITE 1:

Elder's Park Crosswalk & path resurfacing





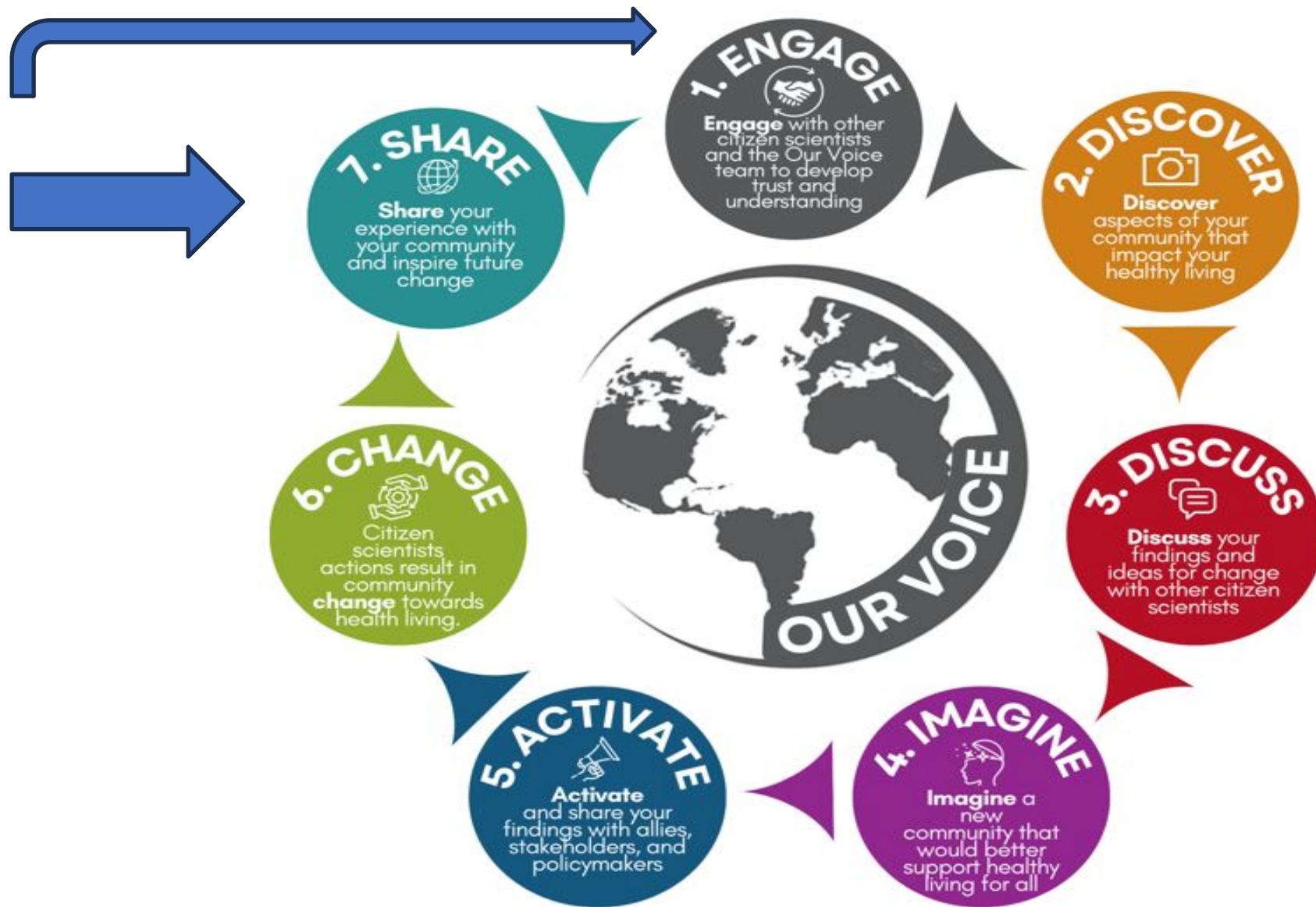


SITE 2:

Saxa Ln & Blind Barnaby St







Lemlmtš | Hu sukitqukni | Thank you

Samantha.morigeau@cskthealth.org

Maja.pedersen@mso.umt.edu

References

- Fan Y, Phua P. The Health and Transportation Nexus: A Conceptual Framework for Collaborative and Equitable Planning. May 2022. https://mdl.mndot.gov/_flysystem/fedora/2023-01/trs2201.pdf Accessed 1/6/2025
- Hansen AY, Hartley D. Promoting active living in rural communities. San Diego, CA: Active Living Research. 2015. https://activelivingresearch.org/sites/activelivingresearch.org/files/ALR_Brief_RuralCommunities_Sept2015.pdf Accessed 2/12/2025
- King AC, King DK, Banchoff A, Solomonov S, Ben Natan O, Hua J, Gardiner P, Goldman Rosas L, Rodriguez Espinosa P, Winter SJ, et al. Employing Participatory Citizen Science Methods to Promote Age-Friendly Environments Worldwide. *International Journal of Environmental Research and Public Health*. 2020; 17(5):1541. <https://doi.org/10.3390/ijerph17051541>
- Omura JD, Carlson SA, Brown DR, et al. Built Environment Approaches to Increase Physical Activity: A Science Advisory From the American Heart Association. *Circulation*. 2020;142(11):e160-e166. doi:10.1161/CIR.0000000000000884
- Redman-MacLaren M, Mills J, Tommbe R. Interpretive focus groups: A participatory method for interpreting and extending secondary analysis of qualitative data. *Global Health Action*. 2014 Dec 1;7(1):25214. <https://doi-org.stanford.idm.oclc.org/10.3402/gha.v7.25214>
- Smarth Growth for America. Dangerous by design 2024. <https://smartgrowthamerica.org/dangerous-by-design/> Accessed 3/5/2025
- Oetzel JG, Wallerstein N, Duran B, Sanchez-Youngman S, Nguyen T, Woo K, Wang J, Schulz A, Keawe 'aimoku Kaholokula J, Israel B, Alegria M. Impact of participatory health research: a test of the community-based Participatory Research Conceptual Model. *BioMed research international*. 2018;2018(1):7281405.