

Quick-Builds in Indian Country: Advancing Road Safety through Community Engagement

Sheri Bozic, Director

Planning, Development & Transportation Department

Pueblo of Jemez, New Mexico

August 28, 2025



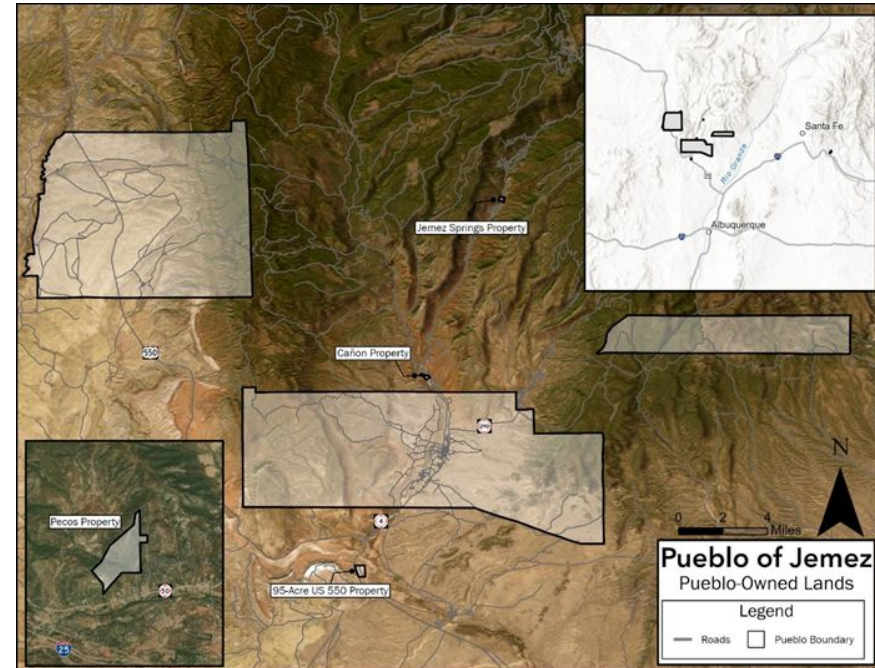
JEMEZ
PLANNING DEVELOPMENT
& TRANSPORTATION



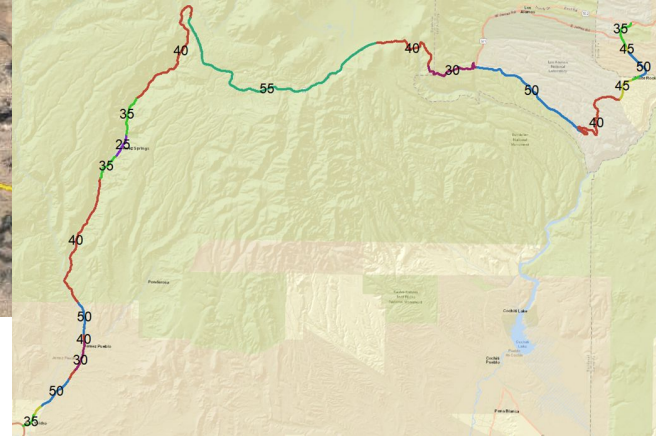
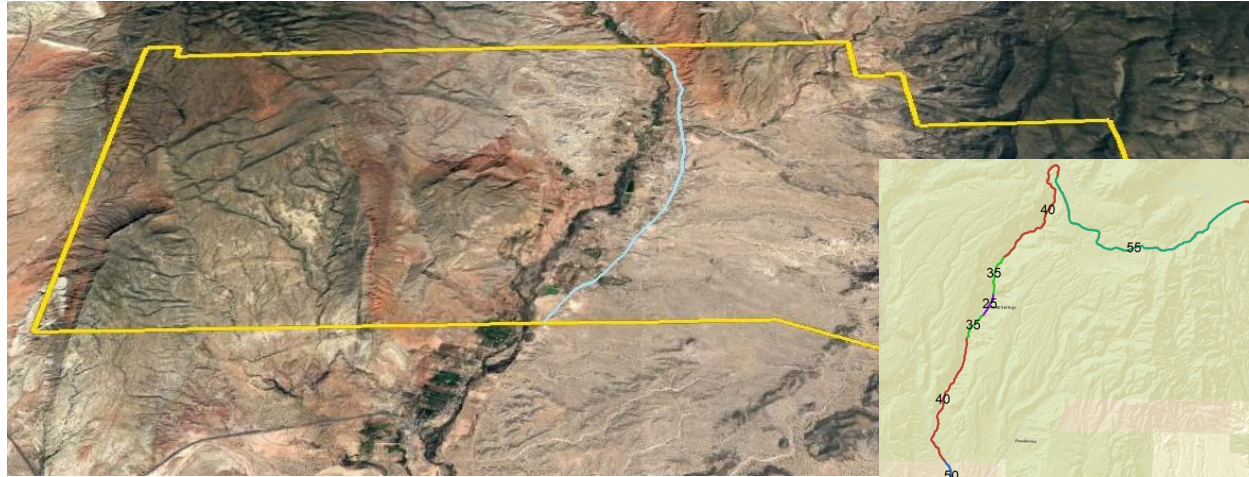
Pueblo of Jemez

Demographics & Transportation Program

- Population: ~3,900
- Pueblo of Jemez land grant, Ojo Del Espiritu Santo, Canada de Cochiti = 89,000 acres
- Annual Tribal Transportation Program funds = \$900K-\$1M
- Total Staff = 9
- Road Inventory Miles = 250
- Safe and accessible pedestrian facilities = top priority



The Problem with the NM-4 Highway



The Problem with the NM-4 Highway

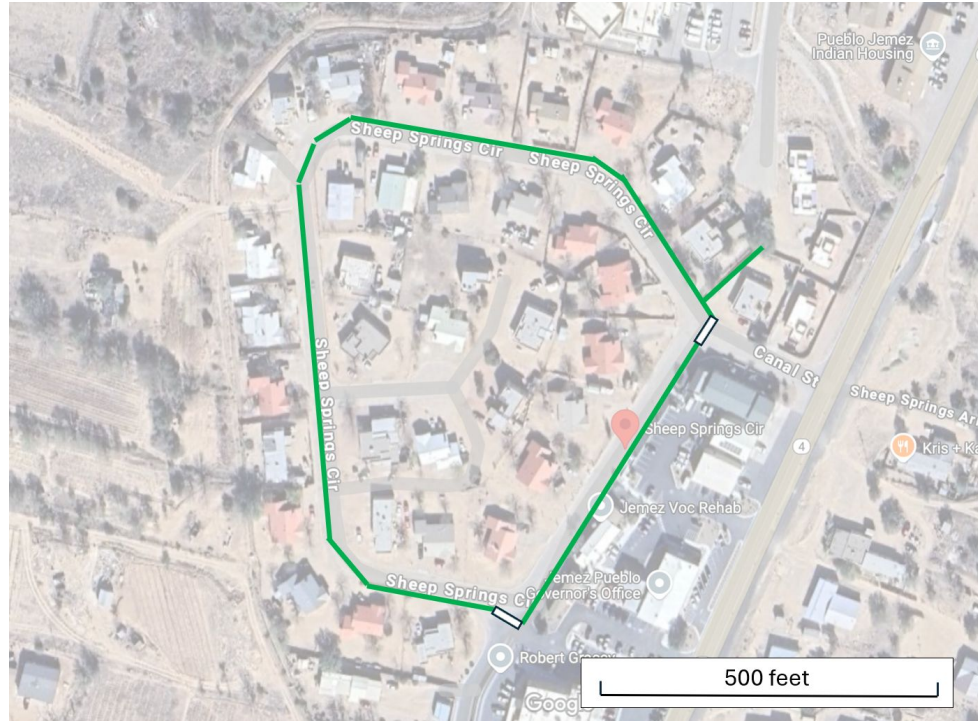




Value of Implementing a QB Project on a Pueblo Roadway



QB Project on Sheep Springs Circle Design



QB Project on Sheep Springs Circle Supplies & Costs

POJPedestrian & Bicycle Safety Traffic Calming Quick-build Project						
Supplies & Vendor List						
Vendor	Item	Description / Size	Unit	Quantity	Unit Price	Total
Road Safe	Delineators/Tube Grabber	42" Grab Tube Reflective w/12#Base	EA	150	\$22.73	\$3,409.50
	Pavement Marking Tape	Temp Removable Tape 4" x 500 feet	LF	2,700	\$1.23	\$3,321.00
	Stop/Slow Signs	18" Stop/Slow Signs for Traffic Control	EA	2	\$23.47	\$46.94
	Handles for Stop/Slow Signs	60" Wood Handle for Stop/Slow Signs	EA	2	\$5.64	\$11.28
	Pedestrian Ahead Signs	(6) Pedestrian Ahead Signs	EA	6	\$93.44	\$560.64
My Parking Sign	Centerline "Yield to Peds" Signs	State Law Yield Pedestrian Crosswalk Kit (K2-5995-KIT)	EA	4	\$199.95	\$799.80
Home Depot	Rectangular Planters	Vigoro Resin Garden Beds	EA	12	\$80.64	\$967.68
Alameda Greenhouse	Potting Soil	Ultimate Potting Mix - 3 FT ³	CUBIC FT	40	\$35.00	\$1,400.00
	Plants	Perennials, herbs	4" - 6"	120	\$5.46	\$655.20
	Tools	Steel Trowels	EA	2	\$19.99	\$39.98
Jackalope	Fruit Trees	Various - purchased on 3/31/25	3-GAL	17	various	\$999.87
360 Business Products	Gardening Gloves	Med, Large, X-large gloves	DOZEN	4	\$24.70	\$98.80
	Sidewalk Chalk	Washable Sidewalk Chalk	64-BOX	2	\$13.96	\$27.92
	Bottled Water	16.91 oz. Bottled Water	24-CARTON	4	\$8.22	\$32.88
Juan Sanchez	Taco Truck	Sanchez Taco Truck	MEAL	75	\$14.00	\$1,050.00
		Travel Fee	FLATRATE			\$50.00
Total						\$13,471.49



QB Project on Sheep Springs Circle Logistics

- Safety vest & Gloves
- Install crosswalk
- Assemble & position delineators
- Plant fruit trees, flowers, & herbs

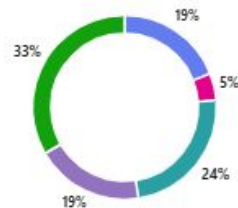


Community Survey Results

Sheep Springs Circle

4. How satisfied are you with the setup and installation of the temporary Quick Build project?

- 1 - Very Dissatisfied 4
- 2 - Dissatisfied 1
- 3 - Neutral 5
- 4 - Satisfied 4
- 5 - Very Satisfied 7



9. Would you support making pedestrian improvements permanent in Sheep Springs Circle (e.g., sidewalks, crosswalks)?

- Yes 13
- No 5
- Unsure 3



Questions

Contact Information:

Sheri Bozic, Director

Planning Development & Transportation Department

Pueblo of Jemez

Sheri.Bozic@jemezpueblo.org

(575)834-0094

