



Walkability From The Ground Up

Building Community, Safety, and
Accessibility



Community Engagement

Resident-Driven Decision Making

Our work is rooted in strengthening community—by investing in people, improving neighborhood conditions, and making sure residents feel safe, connected, and heard.

We empower local voices through dedicated leadership and collaboration:

- **Advisory Committee:** Formed a Resident Advisory Committee to engage residents directly in decision-making processes.
- **Investing in People:** Prioritizing local talent and resources to build long-term community wealth.
- **Connectedness:** Ensuring every resident has a platform to be heard and valued.



Dedicated Spaces

Community Park Development

Our development of dedicated neighborhood park spaces creates a multipurpose environment for the entire community.

These spaces are intentionally designed for:

- **Exercise & Health:** Providing accessible equipment and paths for active lifestyles.
- **Connection:** Fostering community bonds in shared outdoor gathering spaces.
- **Outdoor Activity:** Safe environments for play, recreation, and fresh air.



Accessibility

Safe & Inclusive Infrastructure

We partnered with the city to **repair sidewalks**, ensuring safer passage for residents of all ages and abilities.

Our development of a neighborhood walking loop path creates a dedicated space for:

- **Exercise & Health:** Promoting active lifestyles through accessible paths.
- **Connection:** Fostering community bonds in shared outdoor spaces.
- **Outdoor Activity:** Safe environments for play and recreation.



Community Safety

Environmental & Secure Solutions

We have proactively addressed environmental and safety concerns by installing **solar lighting** in previously dark areas.

These targeted improvements provide two-fold benefits:

- **Increased Visibility:** Eliminating dark spots to improve navigational safety.
- **Resident Security:** Helping community members feel more secure and confident in their own neighborhood.





SAFER ST. CLAUDE

Building Community Power for Safer Streets in New Orleans

Laura Harris

Education & Policy Consultant, Bike Easy

2024 Walking College Graduate

St. Claude Avenue

A State Highway Through Neighborhoods

- Major corridor in New Orleans
- Connects multiple neighborhoods
- Heavy vehicle traffic
- Daily walking, biking, transit use
- History of severe crashes and traffic violence

A transportation corridor — and a community main street





BIKE
LIGHT
GIVEAWAY



* Must
have your
bicycle on you
bike easy *





Ghost bike memorial on St. Claude and Elysian Fields. Source: NOLA.com



SUSPECT ARRESTED FOLLOWING DEADLY HIT AND RUN

10:11
85°



FOX 8 NEWS
DOWNLOAD OUR NEWS APP

WEATHER
OUTLOOK

BAY ST. LOUIS

SUNDAY



81

MONDAY



HI 93
LOW 76

TUESDAY



HI 95
LOW 76

Source: Fox 8



At the time he was killed, Dustin was on a dream trip around the United States. Dustin loved to travel, good food, good people, and good music which he found in abundance in New Orleans. Dustin was a caring person who cared. He had a profound respect for all people and offered those around him absolute compassion. In his every action, Dustin made sure that anyone he encountered was able to live their life with the utmost dignity and acceptance.



Dustin Strom, 36 - June 13, 2023



St Claude Ave and Marigny St



Michael Milam, was tragically killed in a hit-and-run crash while bicycling on St. Claude Avenue at Alvar Street on July 12, 2025. Originally from Houston, Michael had recently relocated to New Orleans in June to start a new chapter and was working as a bartender. Known for his warm personality, quick wit, and generous spirit, he was excited to embrace life in the city and connect with its vibrant community. His life was cut short far too soon on one of New Orleans' most dangerous corridors, and his memory now serves as a powerful reminder of the urgent need for safer streets.



Michael Milam, 37 - July 12, 2025



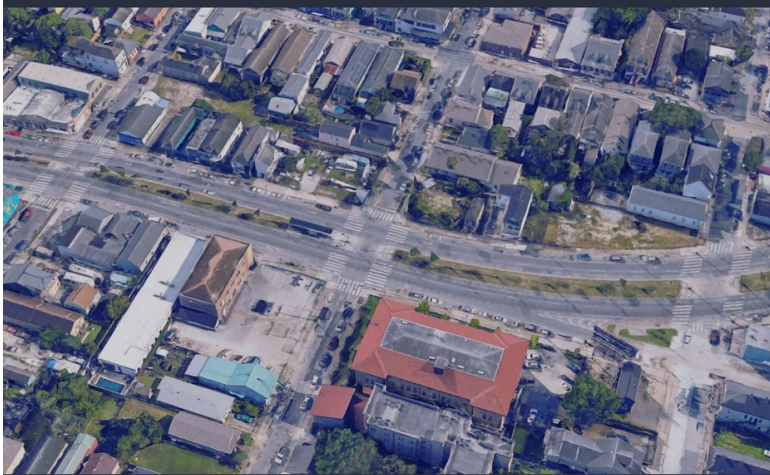
St Claude Ave and Alvar St



Sher Stewart, a 74-year-old artist, disability rights advocate, and beloved fixture of Jackson Square, was tragically killed while biking near St. Claude Avenue and Pauger Street on July 16, 2021. A passionate portrait artist who began painting in the French Quarter in the late 1960s, Sher was known not only for her creative talent but also for her activism in the LGBTQ+ and disability rights communities. Her warmth, vibrancy, and unwavering spirit left a deep mark on New Orleans. Sher's untimely death in a hit-and-run crash underscores the urgent need for safer streets and justice for those who dedicate their lives to making the city brighter.



Sher Stewart, 74 - July 16, 2021



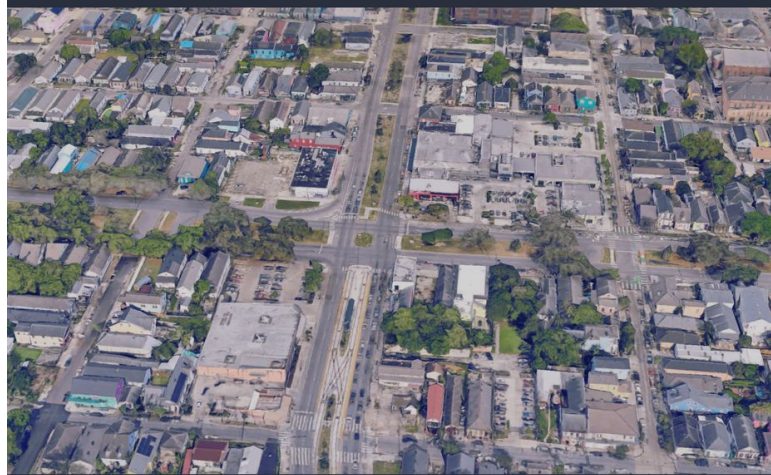
St Claude Ave and Pauger St



Philip Wayne Geeck, 52, was tragically killed in July 2014 while riding his bicycle westbound on St. Claude Avenue when an 18-wheeler turned sharply onto Elysian Fields and veered into the adjacent bike lane, fatally striking him as he rode. A dedicated cyclist and familiar face in the New Orleans biking community, Philip was known for simply sharing the road as he commuted.



Philip Wayne Geeck , 52 - July 17, 2014



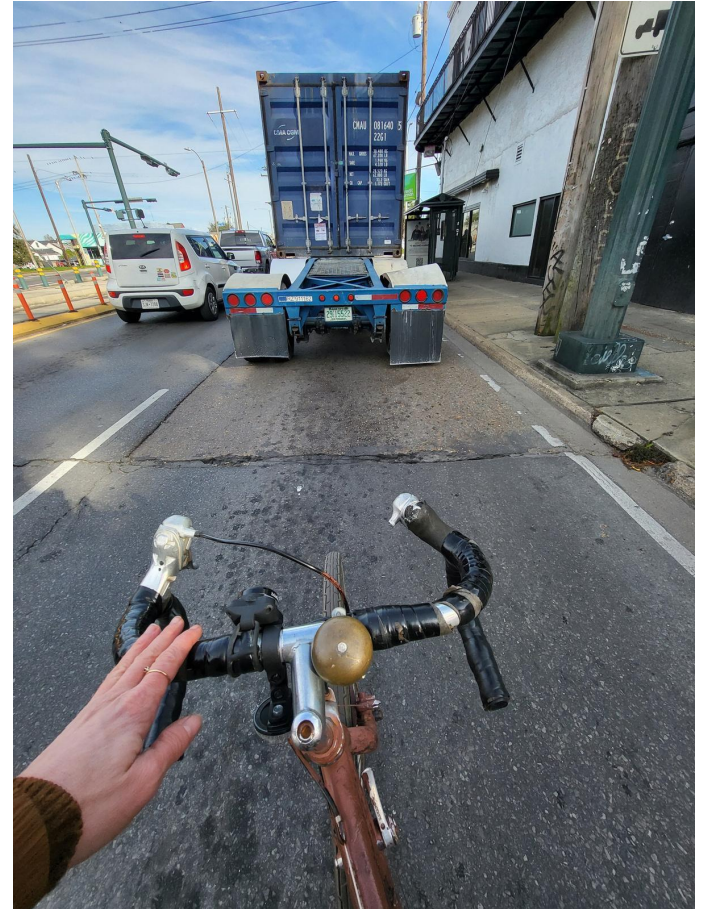
St Claude Ave and Elysian Fields

Change Starts With Paying

Attention

- Walking and biking the corridor regularly
- Seeing unsafe conditions firsthand
- Conversations with neighbors and advocates
- Walking College helped turn concern into action

You do not need to be an expert to start making change.



The Community Already Had Solutions

What helped shape the work:

- Neighborhood observations
- Conversations with residents
- Listening to local businesses
- Community rides and memorial rides
- Visual mockups and sketches
- Collaboration across organizations

The goal wasn't to speak for the community — it was to help amplify what people were already saying.





Critical Mass Ride July 14, 2025

WHAT INFRASTRUCTURE IMPROVEMENTS WOULD MAKE ST. CLAUDE AVE SAFER

FOR PEOPLE WHO WALK, BIKE AND USE PUBLIC TRANSIT AND MOBILITY DEVICES?

SAFER, MORE FREQUENT CROSSWALKS



PEDESTRIAN SIGNALS / SAFER SIGNAL TIMING



CURB EXTENSIONS



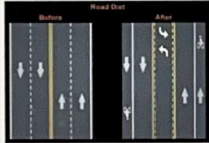
PROTECTED BIKE LANES



MEDIUM/ REFUGE ISLANDS



TRAFFIC CALMING MEASURES



BETTER LIGHTING



BUS STOP UPGRADES



ADA RAMP AND SMOOTHER SIDEWALKS



TREES AND SHADE



Tactics That Helped Build Support

- Coalition building across sectors
- Community-led events and rides
- Business community engagement
- Visual mockups and storytelling
- Petitions, media, and public pressure
- Making participation accessible



Small actions helped create larger momentum

Different tactics reached different people

Tactics That Helped Build Support

Visualize!



Dream



Actualized

SPARK: Light Up St. Claude Event



Bywater-Marigny business group pushes for a more bikeable, walkable St. Claude corridor



Members of the community watch speakers ar... ▲

BY JONAH MEADOWS | Staff writer

Jan 10, 2026



A new local business owners' association has launched a campaign aimed at improving the

Challenges We Face

- Slow timelines
- Jurisdictional complexity
- Limited resources
- Skepticism about change
- Maintaining momentum over time
- Balancing urgency with long institutional timelines



Sustained community pressure matters

Continuing the Work

Today the effort includes:

- Ongoing coalition advocacy
- Community engagement
- Safer street design conversations
- Increased public awareness
- Growing political attention

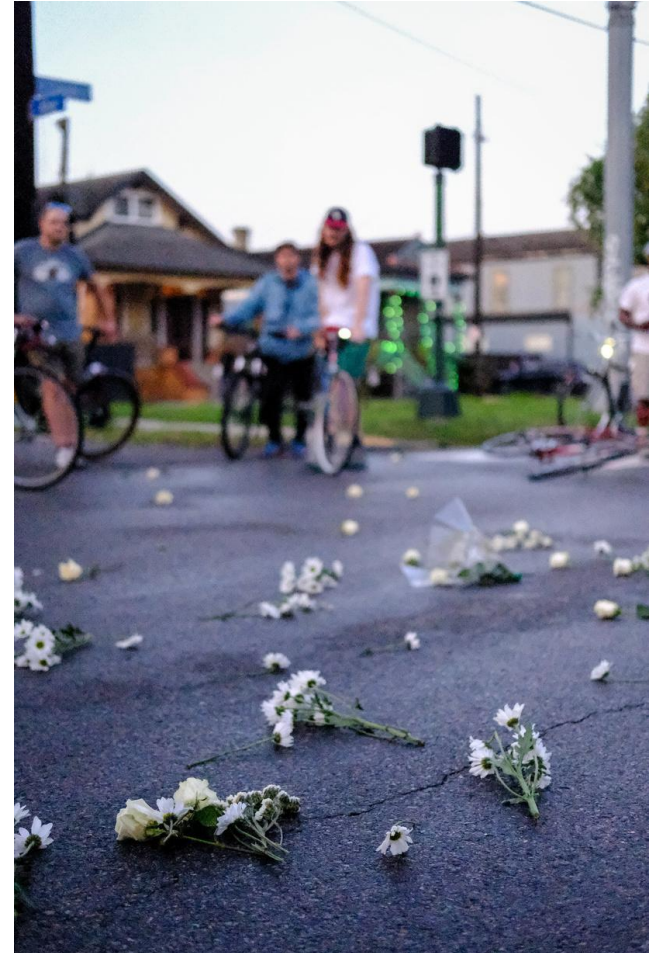
Progress happens when communities refuse to let issues disappear.



What I Hope People Take Away

- You do not need to be an expert to get involved
- Community knowledge is essential
- Visualizing change helps people engage
- Relationships sustain advocacy
- Small actions can grow into larger movements

Walkability work is about people, not just infrastructure.



Hot Springs Arkansas





Established 1832

Oldest Protected Federal Land

W.B. 1832

THE FOX SPRINGS OF THE MASHITA

See & in the List to the System

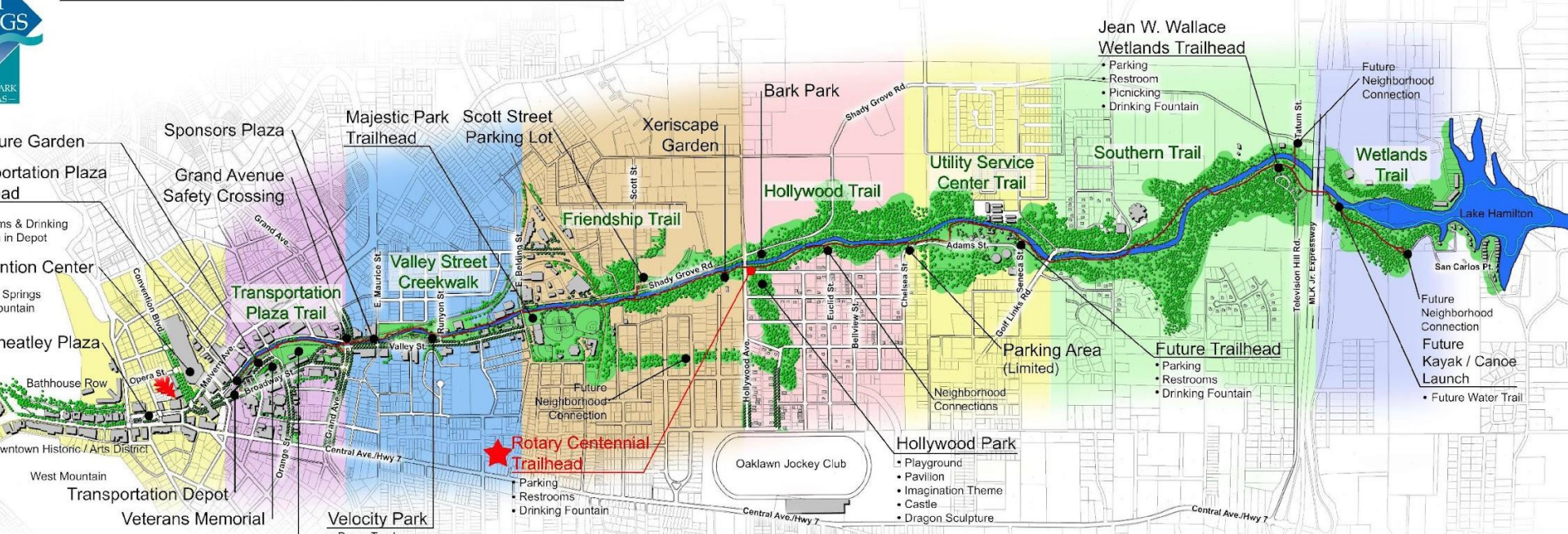


The most urban & smallest national park (5,550 acres). Ouachita National Forest is 170,500 acres. Lake Ouachita State Park is 40,000 acres.





HOT SPRINGS CREEK GREENWAY TRAIL



Rotary Centennial Trailhead

- Parking
- Restrooms
- Drinking Fountain

Velocity Park

- Pump Track
- Bicycle Playground
- Restrooms
- Butterfly Garden

Hollywood Park

- Playground
- Pavilion
- Imagination Theme
- Castle
- Dragon Sculpture

Parking Area (Limited)

Future Trailhead

- Parking
- Restrooms
- Drinking Fountain

Jean W. Wallace Wetlands Trailhead

- Parking
- Restroom
- Picnicking
- Drinking Fountain

Transportation Plaza Trail	1/4 mile
Valley Street Creekwalk	1/2 mile
Friendship Trail	3/4 mile
Hollywood Trail	1/2 mile
Utility Service Center Trail	1/2 mile
Southern Trail	1 mile
Wetlands Trail	1/4 mile

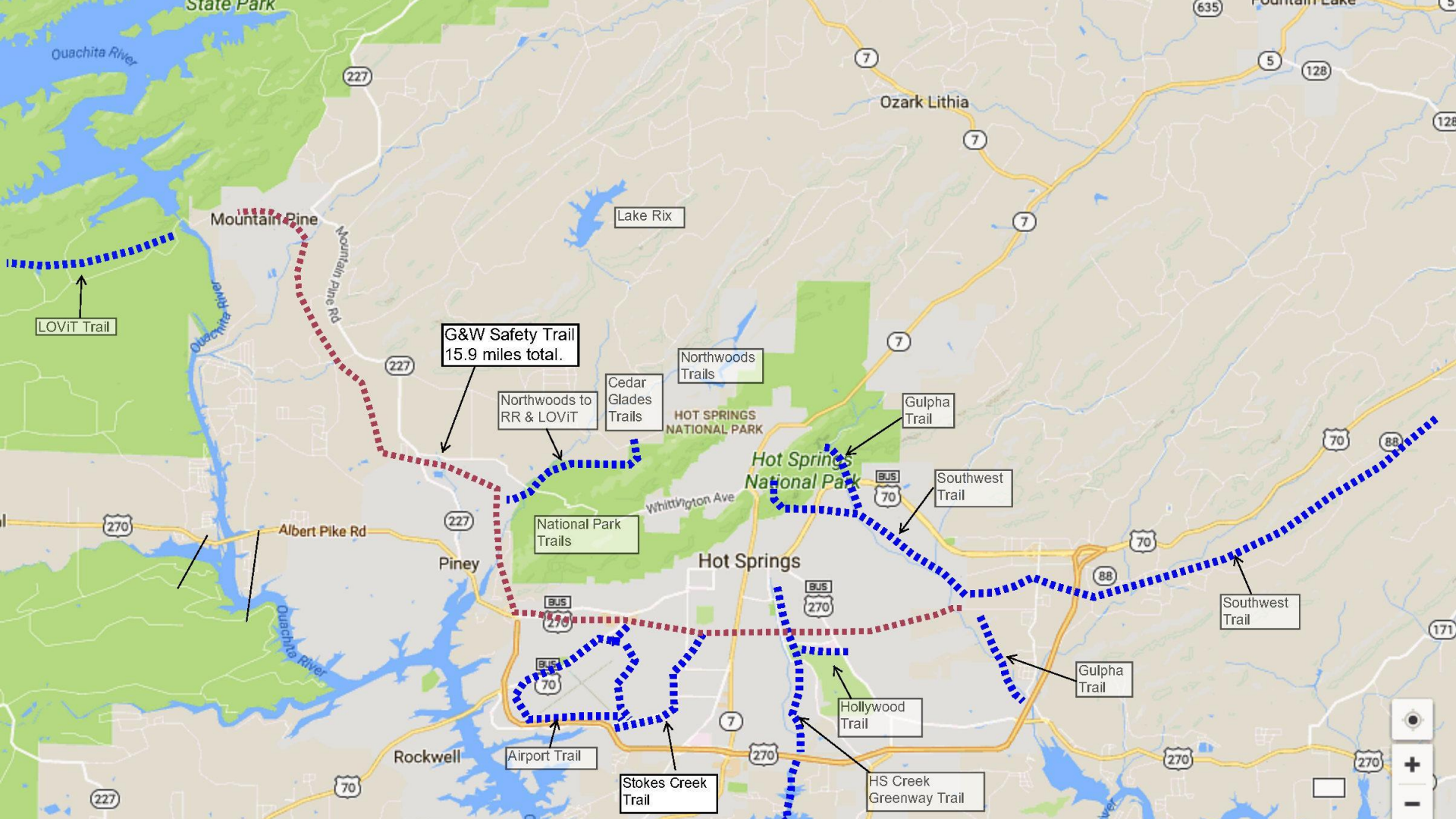
30 years to create 3.75-mile-long trail
finished this year





second trail
Northwoods
Trail

Award winning 36-mile mountain bike trail.



LOViT Trail

G&W Safety Trail
15.9 miles total.

Northwoods to
RR & LOViT

Cedar
Glades
Trails

Northwoods
Trails

Gulpha
Trail

Southwest
Trail

National Park
Trails

Southwest
Trail

Gulpha
Trail

Hollywood
Trail

HS Creek
Greenway Trail

Airport Trail

Stokes Creek
Trail



third trail

Stokes

Creek

Trail

3.2 miles